

Silverley

VISUALS

About Us

Jack is an award winning RIBA chartered architect with 10+ years of working within the design and visualisation industry.

Anna is a PRINCE2 qualified project manager with experience managing teams and large projects.

While planning an event in 2021, they turned to Jack's skills in 3D visualisation to help fully realise their bespoke vision and iteratively finesse it until it was perfect

The end result was a personalised and unique event, perfectly crafted to reflect their styles and interests as well as being within budget.

Using their personal and commercial experience, they will help you design and visualise a beautiful, bespoke event to fulfil your clients' wildest dreams.





What We Do

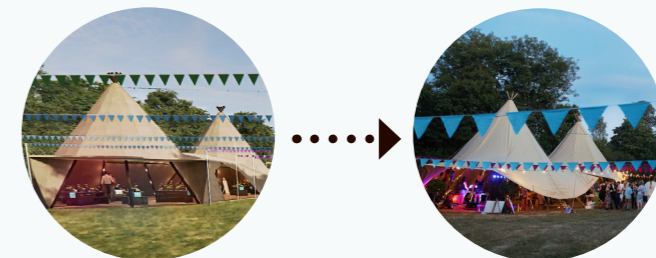
At Silverley Visuals, we specialise in 3D visualisations that empower you to transform your client's vision into a tangible reality. Our cutting-edge technology and skilled team of experts offer a range of benefits that revolutionise the way event and wedding production is conceived, presented and executed.

Our 3D visualisations allows you to realize and clarify your client's vision before any significant expenditure occurs. By providing realistic and immersive renders, we help you eliminate uncertainty, minimise risks, and make informed decisions from the very beginning.

Our visuals can serve as initial concepts or fully realised ideas, enabling you to effectively communicate and pitch your vision to your clients. With stunning visuals that outshine competitors, you will leave a lasting impression and increase your chances of winning projects.

As ideas evolve our iterative process ensures your concepts adapt to changing requirements seamlessly. We swiftly incorporate new ideas, enabling you to refine and enhance your designs at any stage of the project.

Ultimately, our 3D visualisations provide confidence. By offering a clear understanding of the end result, you can make informed decisions and inspire confidence in stakeholders, resulting in successful pitches and productions.



Our Process

Scope Definition

During the scope definition we discuss what you and your client's needs are and what package would best meet your needs. Depending on the outcome of the consultation, we would proceed to the Survey or Testing stage.

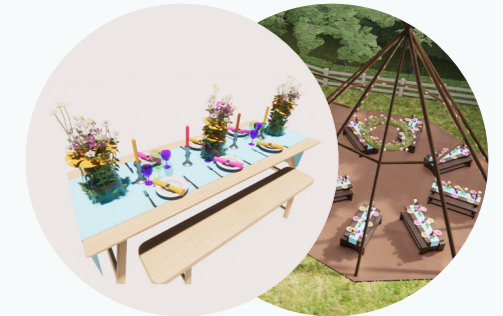


Testing

Once you are happy with the model, we will revisit the initial design ideas. We submit them to you fully visualised so you can look at what works in the space and begin making adjustments until you are happy.

Reviewing

Using yours and the clients' feedback, we begin changing the model over several stages, sending you images, videos or panoramatics for you to review until you are happy.



Survey

The next step is to understand the venue. Depending on the location and the level of detail requested, this can be done through online research or through in person site surveys.



Finesse

We work with you and your client to finesse your designs and give you total confidence in the shared vision moving forward.

Build

Using the information gathered in the survey, we will create a 3D model to use as a canvas to test and visualise ideas.

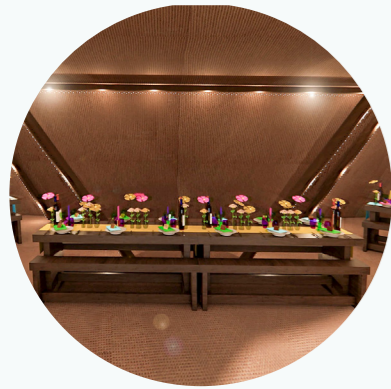


Share

Once the clients' ideas are finessed, we will produce the final images, videos or 3D panoramatics that can be used to plan, coordinate and communicate with suppliers.



Our Portfolio





Our Services

VENUE BUILD AND VISUALISATION - from £1200

- Desktop or physical survey*
- Max. 3 rounds of reviewing
- Max. 4 rendered images

Additional costs

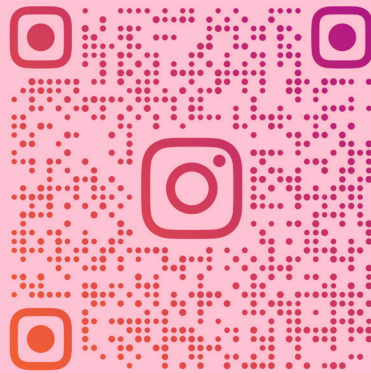
- 3D Panoramics from £300
- Edited video from £300

*Travel costs outside of the M25 are chargeable at cost + 10% handling fee.

TIME LINE

Below is a suggested timeline for where our services would be most valuable to you and your clients:





SILVERLEY_VISUALS

CONTACT

Website: www.silverleyvisuals.co.uk
Email: anna@silverleyvisuals.co.uk
Tel: 07398686490
Mail: 89 Brighton Road,
South Croydon,
CR2 6EJ